



ANNUAL REPORT 2021

MICHIGAN HEALTH ENDOWMENT FUND



TABLE OF CONTENTS

MESSAGE FROM THE CHAIR 04

CHATTING WITH PAUL HILLEGONDS & NEEL HAJRA 06

GRANTMAKING 10

BEHAVIORAL HEALTH 12

HEALTHY AGING 16

NUTRITION & HEALTHY LIFESTYLES 20

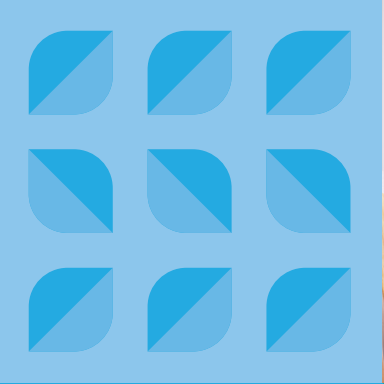
2021 Multi-Funder Collaborative 23

COMMUNITY HEALTH IMPACT 24

SPECIAL PROJECTS & EMERGING IDEAS 32

FINANCIALS 36

BOARD OF DIRECTORS 38



MESSAGE FROM THE CHAIR

2021 was a year of evolution for the Health Fund. We officially ushered in a new strategic plan, welcomed a new CEO, and—like our incredible grantees—continued to adapt to shifting circumstances in the health landscape.

A REFINED STRATEGY

When the Health Fund prepared to begin making grants in 2014, we were brand new. As a result, our first strategic plan painted in broad strokes, allowing for learning and iteration as we hired staff and grew operations. Several years and hundreds of grants later, we had the benefit of experience: lessons in how to be an effective partner, a surer understanding of our role in the state's health landscape, and a wealth of wisdom from our grantees.

For example, we know our grantmaking is helping address longstanding challenges in behavioral health and providing a critical funding source for programs focused on healthy aging. We've learned that our efforts in nutrition and healthy lifestyles are most effective when aimed at systems change,

and locally-driven solutions are key to community health. We've also come to recognize areas where we can increase our impact, like maternal and infant health. And across the board we see how tackling health disparities is a critical first step to advancing health equity.

The new strategic plan is designed to guide us through 2025 with the benefit of both this hindsight and the insights of our dedicated staff, while leaving room to grow as we find new ways to fulfill our mission of a healthier Michigan. You can view the strategic plan and a one-page summary at mihealthfund.org/strategicplan.

A CHANGE IN LEADERSHIP

With an updated direction came a timely, if bittersweet, opportunity to evolve our leadership in tandem with our strategy. Paul Hillegonds has been a stalwart champion of Michigan residents for decades, and we've been lucky to have him at the helm since we got off the ground in 2015. And our lucky streak continued as Neel Hajra joined us as the new CEO in the fall of 2021.

Neel brings with him abundant experience in community health, philanthropy, and the nonprofit sector in Michigan. He previously served as the CEO of the Ann Arbor Area Community Foundation, where—of particular interest to the Health Fund—he helped the foundation become the largest grantmaker for older adults among Michigan community foundations. For more on Neel's background, visit mihealthfund.org/MeetNeel.

Paul and Neel have at least one major trait in common: a collaborative approach to leadership. They've worked together over many months to ensure a smooth transition, and that spirit is on display in a conversation with both Paul and Neel captured for this report. Their dialogue covers their respective insights about where the Health Fund has been, where we're headed, and what challenges and opportunities remain in our path. Read the conversation on page six.

Beyond our own operations, the world at large presented opportunities to evolve in 2021. As COVID-19 persisted, we continued to support virtual healthcare solutions and vaccination efforts for hard-to-reach populations like homebound older adults. These initiatives may have been spurred or hastened by the pandemic, but they also helped lay the groundwork for stronger crisis response and increased healthcare access in the future.

And as that future unfolds, we will continue to evolve alongside our grantees and Michigan communities. The Health Fund's next five years will be built on the foundation of our initial strategic plan and shaped in the spirit of our enduring principles. These years will also be energized and animated by our new plan and our new CEO. This moment—where we can articulate how the past flows into the present—is simply one opportunity to take stock of our evolution, to reflect on what we've learned, and to look ahead to all we can accomplish together.

SUSAN JANDERNOA
BOARD CHAIR



FROM ONE CEO TO ANOTHER:

CHATTING WITH PAUL HILLEGONDS & NEEL HAJRA



THIS YEAR WE'RE TALKING ABOUT THE HEALTH FUND'S EVOLUTION, AND ONE OF THE MAJOR TRANSITIONS IN 2021 WAS THE PASSING OF THE CEO BATON. PAUL, WHY WAS THE TIMING RIGHT FOR NEW LEADERSHIP?

PAUL: It was the strategic planning process, where the board embraced where we've been in the first few years, but also talked about the need for growth and change. It set in for me that it was time to pass the torch, and allow new leadership to take that stage of growth and evolution to a higher level of operations.

But even when the board first interviewed me for the CEO role, I advised them to think about succession. I was retired! So I wasn't sure how long I'd be staying, and I never stopped thinking about who might carry on this role. When I first met Neel, years ago, I thought that he was the kind of person who could lead the Health Fund in the future.

NEEL, WHAT ATTRACTED YOU TO THIS ROLE?

NEEL: As Paul mentioned, we'd known each other for several years through service roles including the Council of Michigan Foundations (CMF) board. I'd also collaborated with the Health Fund on aging-related work, and I was impressed with the organization's accessibility and commitment to the mission. Meanwhile, I'd gotten more involved in public health and had come to believe that the intersection of health and philanthropy offered an opportunity for transformational change. So when the Health Fund announced that Paul would be retiring and posted the position description, I seriously considered the opportunity—a first during my 11 years at the Ann Arbor Area Community Foundation.

AND HOW DOES LEADING THE HEALTH FUND COMPARE TO LEADING A COMMUNITY FOUNDATION?

NEEL: At a community foundation, you learn really quickly that the fastest and most effective way to make change is by empowering the community. Of course, at AAACF we were serving one county—at the Health Fund, we serve all ten million people in Michigan. So we can't possibly be present in every community in Michigan, but I bring that philosophy to my work here: we unleash more impact when we partner with communities, honor their expertise and knowledge, and trust them to identify their aspirations and barriers. Their expertise magnifies ours. And one major tool we do have here is scale. The amount of capital at the Health Fund is greater than that of most community foundations, so we have the ability to pursue both institutional, systems-based work and to support community-driven work.

PAUL: In the new strategic plan, this is one area where the board signaled to us that they want the Health Fund to grow. How do we engage more effectively at the community level? As a relatively small organization that works statewide, we don't have all the answers. So that's one reason I was so excited about Neel joining the Health Fund; he brings his experience working with communities.

LARGE INSTITUTIONS, COMPLEX SYSTEMS, AND LOCAL COMMUNITIES ALIKE WERE CHALLENGED BY COVID-19 OVER THE PAST COUPLE OF YEARS. HOW HAVE OUR GRANTEES RESPONDED TO THE PANDEMIC, AND WHAT DO YOU THINK THE LASTING IMPACT OF THAT RESPONSE WILL BE?

PAUL: One major example of a response that will have a lasting impact is telehealth. In 2019, our Behavioral Health Access Study provided incredible, detailed insights into statewide access challenges, and telehealth was one of the recommendations for helping more people get healthcare from home. Along comes COVID, and telehealth gets supercharged with supportive policies and funding. Now, private insurers are more on board, and federal and state policy will continue to be supportive. I think we'll have more access to behavioral healthcare than we had before the pandemic, because of telehealth.

NEEL: Speaking of data, COVID-19 put to bed any question about disparities in health outcomes. The pandemic data reflected larger systemic inequities, and now we have even more allies—partners, public agencies, institutions—who see the disparities and agree we need to do something about it.

EQUITY IS CERTAINLY ANOTHER FACET OF THE HEALTH FUND'S EVOLUTION. CAN YOU EACH REFLECT A LITTLE BIT ABOUT HOW WE'RE APPROACHING HEALTH EQUITY?

PAUL: We're evolving along with society, and certainly have gotten more conscious of how we see issues of race and equity. As a statewide organization we can be a unifier—some challenges are as severe in the U.P. as they are in metro Detroit, and rural indigenous populations face many of the same issues as people of color in urban neighborhoods. And a big part of health equity is listening to communities and addressing systemic barriers.

NEEL: The very basis of philanthropy is to recognize hardships and challenges that haven't been solved by government or individuals. Equity is intertwined with the whole idea of philanthropy and always has been. So the pursuit of equity should be unifying, but it can be polarizing. It's incumbent on us to define what we mean by health equity and show how that tracks back to clear data about health disparities.

LOOKING AHEAD TO THE NEXT FIVE YEARS, HOW DO YOU HOPE THE HEALTH FUND EVOLVES?

NEEL: Five years from now, I hope we're still pushing forward relentlessly. For every step forward, we should want to take two more steps forward. That sense of urgency is a mentality and a culture. And we have the luxury of pairing it with the long view. We know that some of our strategies take years to come to fruition. In five years, we should still be looking at the big picture but also be that much more networked and that much more connected to community—so that every goal we achieve opens the door to more things we can accomplish.

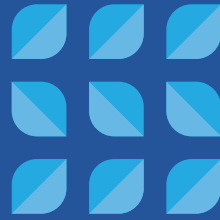
PAUL: Well said. I'll just add that the Health Fund has always been uniquely positioned to connect community voices with big systems. I think as we continue to better understand the relationship between both, we have the potential to have an even greater impact on Michigan residents.



2021

GRANTMAKING





2021 GRANTS

BEHAVIORAL HEALTH

AUSABLE VALLEY COMMUNITY MENTAL HEALTH **\$285,527**

OGEMAW COUNTY NO WRONG DOOR ACCESS PROGRAM

To strengthen the behavioral health system of care in rural Ogemaw County by streamlining entry into mental health and substance use disorder treatment and building collaborative care transitions across providers.

CARE OF SOUTHEASTERN MICHIGAN PROGRAM **\$146,664**

NOT ON TOBACCO (N-O-T) TEEN VAPING CESSATION

To provide comprehensive substance use disorder treatment to youth needing more intensive therapy, with school staff as trained facilitators.

CATHOLIC HUMAN SERVICES, INC. **\$492,563**

RECOVERY RESOURCES FOR TEENS AND FAMILIES

To increase and enhance integrated family and peer recovery coach services in a seven-county area, supporting substance use disorder recovery for adolescents and their families.

CHERRY HEALTH **\$293,042**

INTEGRATING YSBIRT IN SCHOOL-BASED HEALTH CENTER

To enhance workforce knowledge of, and ability to treat, substance use disorders in school-based health centers staffed by Cherry Health, a federally qualified health center.

DISTRICT HEALTH DEPARTMENT #10 **\$500,000**

INTERCONNECTED MENTAL HEALTH SYSTEM FOR YOUTH

To establish an interconnected service of school-based mental health supports that will streamline communication across agencies, provide a three-tiered approach to accessing mental health supports, and provide greater reach to families and youth in need.

EASTERN MICHIGAN UNIVERSITY **\$167,002**

SCHOOL-BASED EARLY CHILDHOOD BEHAVIORAL HEALTH PROGRAM

To increase access to early childhood mental health services by delivering no-cost psychological assessments and therapy integrated into early learning centers, while creating a sustainable doctoral-level training opportunity for graduate students.

GFM THE SYNERGY CENTER **\$200,000**

RACIAL DISPARITIES IN BEHAVIORAL HEALTH FOLLOW-UP CARE

To explore the root causes of disparities for African Americans in accessing follow-up care through community engagement via community awareness events, monthly community forums, focus groups, informant interviews, surveys, and continued partnership with community leaders.

KENT INTERMEDIATE SCHOOL DISTRICT **\$70,500**

KISA STUDENT WELLBEING SURVEY

To measure students' perceptions of engagement, social-emotional learning, and diversity, equity, and inclusion with the goal of enabling schools and Kent ISD to identify and utilize effective strategies and interventions.

LIFEWAYS COMMUNITY MENTAL HEALTH **\$78,473**

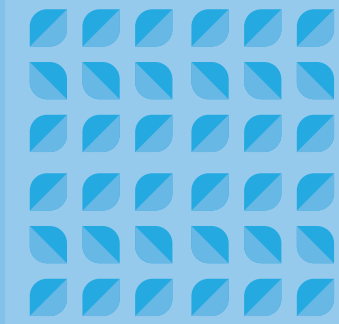
BEHAVIORAL HEALTH BEYOND OUR FRONT DOOR

To expand the reach of behavioral health services by training staff in evidence-based suicide prevention and treatment models, and by embedding 24/7 telehealth therapy services in three community-based organizations, including the Jackson Interfaith Shelter.

LIVINGSTON COUNTY COMMUNITY MENTAL HEALTH AUTHORITY **\$343,428**

EYE MOVEMENT DESENSITIZATION AND REPROCESSING PROGRAM

To train staff in the Eye Movement Desensitization and Reprocessing Program (EMDR), commonly used to treat trauma, to expand the quality of services offered to children in the community mental health system.



MICHIGAN PEER REVIEW ORGANIZATION
\$346,445

LIBRARIES AS MENTAL HEALTH HUBS

To bring direct mental health services, behavioral health awareness, and prevention training to library staff, as well as social worker-led teletherapy and community engagement events in three underserved rural counties.

MIDMICHIGAN HEALTH FOUNDATION
\$250,000

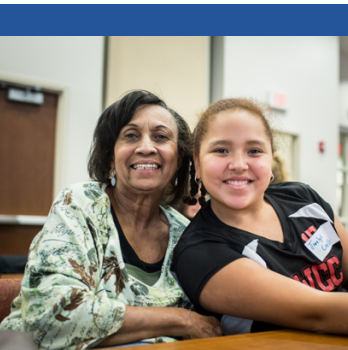
EXPANDING ACCESS TO CARE THRU TECHNOLOGY AND TEAMWORK

To increase access to behavioral health care for people who are experiencing crisis in a 23-county service area by providing a connection to telehealth for patients in seven emergency rooms across the area.

OAKLAND FAMILY SERVICES
\$225,000

BARRIER BUSTING: UNCOVERING DISPARITIES IN BEHAVIORAL HEALTH

To implement three exploratory methods—key informant interviews, focus groups, and surveys—and uncover the barriers to behavioral health care that cause disparities.



SELF-HELP ADDICTION REHABILITATION (SHAR)
\$200,000

DEFINING THE BARRIERS TO ACCESS OUR NEEDS

To work with health agencies and networks in Wayne County to uncover the spectrum of barriers to accessing behavioral health follow-up care and corresponding disparities.

SPECTRUM HEALTH FOUNDATION
\$485,996

SUICIDE S.A.F.E. TEAM RESPONSE: BLUE ENVELOPE

To provide a comprehensive, school-based, suicide prevention and crisis response program, including targeted evidence-based interventions and policy and resource guidance.

THE REGENTS OF THE UNIVERSITY OF MICHIGAN
\$500,000

TRAILS: BUILDING A STATEWIDE STUDENT MENTAL HEALTH SOLUTION

To promote health and educational success for K-12 students by embedding high quality, evidence-based mental health programming within schools and by investing in local school staff who are trusted by students and familiar with the local culture and social context.

TRINITY HEALTH, MICHIGAN D/B/A MERCY HEALTH SAINT MARY'S
\$500,000

COLLABORATIVE BEHAVIORAL HEALTH CRISIS STABILIZATION UNIT

To develop and test a new treatment model that will provide immediate behavioral health crisis management, available to all community members regardless of insurance type.

UPPER PENINSULA HEALTH CARE SOLUTIONS
\$255,318

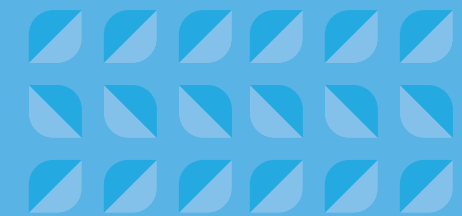
BEHAVIORAL HEALTH TELE-ECHO PROJECT

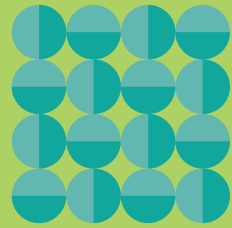
To provide primary care providers with the knowledge, tools, and referral pathways to optimally treat patients with a mild to moderate behavioral health diagnosis.

WOMEN OF COLORS (FIDUCIARY: SAGINAW COMMUNITY FOUNDATION)
\$200,000

RACIAL DISPARITY IN BEHAVIORAL HEALTH PROJECT

To provide and facilitate outreach, discovery sessions, and community forums focused on project goals of understanding underlying causes of racial disparities in behavioral health.





2021 GRANTS

HEALTHY AGING

ALTARUM INSTITUTE
\$352,644

NURSING HOME STAFF & RESIDENTS: LOSS & ISOLATION SOLUTIONS

To train nursing home staff to address the severe social isolation and loneliness that impacts nursing home residents, as well as the widespread bereavement and grief which can negatively affect the mental health and wellbeing of the resident and the staff who care for them.

CONNECTED NATION, INC.
\$278,444

IMPROVING TELEMEDICINE IN MICHIGAN'S SAULT TRIBE OF CHIPPEWA

To increase the awareness, availability, and use of telehealth applications for older members of the Sault Ste. Marie Tribe of Chippewa Indians by identifying any concerns they may have, as well as by identifying any limitations or barriers for use of this technology for members and providers.

DETROIT AREA AGENCY ON AGING
\$250,000

FOOD FIRST CAREGIVER CONNECT

To develop a pilot project that will improve access to culturally appropriate and healthy meals for caregivers and the individuals they are caring for by connecting them to available food options with local restaurants.

EASTERN MICHIGAN UNIVERSITY
\$409,332

LORI'S HANDS METRO DETROIT: THE SOCIAL PARTNERSHIP

To implement a college student-based program that provides practical home-based services to support older adults and caregivers in the state of Michigan.

HEALTH NET OF WEST MICHIGAN
\$466,037

PARTNERING TO ADDRESS SOCIAL NEEDS FOR OLDER ADULTS

To address the social determinant of health needs of adults aged 60 and older who are screened for social needs at emergency departments and who accept navigation services.

HENRY FORD HEALTH SYSTEM
\$420,599

SPOTLIGHT ON THE PATIENT AS CAREGIVER

To train and implement a tool that will offer physicians insights into their patient's health and wellbeing, provide caregivers a mechanism by which to self-identify, and pinpoint particular stressors that can be targeted for interventions, resources, and supports.

HENRY FORD HEALTH SYSTEM
\$269,442

IMPROVING MANAGEMENT OF CHRONIC PAIN IN PRIMARY CARE

To develop a psychological intervention for pain management to address unmanaged chronic pain among seniors.

HOSPICE CARE OF SOUTHWEST MICHIGAN
\$228,611

ENHANCING CAREGIVING FOR HOSPICE PATIENTS THROUGH TELEHEALTH

To provide more accessible and on-demand care for hospice patients through the launch of a telehealth pilot program to complement existing services.

MARY FREE BED REHABILITATION HOSPITAL
\$351,607

MICHIGAN CHANGES HEALTHY AGING PROGRAM (MI-CHAP)

To develop a program to better support older adults recovering from a stroke as they transition from inpatient rehab back home, using an interdisciplinary care team to troubleshoot difficulties and connect patients to resources.

MHA KEYSTONE CENTER
\$227,721

MICHIGAN CAREGIVER NAVIGATION MODEL PILOT

To address challenges family caregivers often encounter while engaged with a health system.



MICHIGAN HEALTH COUNCIL
\$363,294

REDESIGNING DELIVERY OF ADVANCE CARE PLANNING CONVERSATIONS

To improve access to advance care planning conversations and decrease the amount of 1:1 time it takes to provide them, ultimately resulting in more ACPs completed and more older adults' wishes being honored.

MICHIGAN PEER REVIEW ORGANIZATION
\$423,360

ADDRESSING SOCIAL ISOLATION IN OLDER ADULTS THROUGH PHARMACIES

To identify older adults who are socially isolated or lonely by the pharmacy care team they frequently access and trust and connect them to services available through county councils or commissions on aging, area agencies on aging, or other service providers in the aging network.

MICHIGAN PUBLIC HEALTH INSTITUTE
\$375,589

EMERGENCY PREPAREDNESS FOR AGING PEOPLE WITH DISABILITIES

To reduce the impact emergency events have on older adults and older adults with a disability by assessing the current work of federal, state, and local emergency response agencies and by partnering with them, community-based organizations, and the target populations to improve everyone's response.

MICHIGAN PUBLIC HEALTH INSTITUTE
\$200,000

CULTURALLY APPROPRIATE COMMUNITY-BASED DEMENTIA CARE

To develop culturally relevant psychosocial interventions that reflect diverse approaches to caring for those with Alzheimer's disease and other dementias.

MICHIGAN TRANSPORTATION CONNECTION
\$300,000

ACCESS TO HEALTHCARE

To implement the nationally-recognized model Rides to Wellness in 15 rural counties where transportation, especially across county lines, is a barrier to accessing services.

OAKLAND UNIVERSITY
\$218,373

THE MICHIGAN END OF LIFE NURSING EDUCATION CONSORTIUM (ELNEC) INITIATIVE

To embed specific training in palliative care for residents living with serious illness, especially older adults.

PRIORITY HEALTH
\$499,724

ADVANCE CARE PLANNING FOR HIGH-RISK SNF RESIDENTS

To support advance care planning efforts by focusing on older adults in skilled nursing facilities, building their advance care plans into electronic medical records, and identifying health concerns prior to a potentially avoidable hospital visit.

RELIANCE COMMUNITY CARE PARTNERS
\$249,700

THREE-TIERED APPROACH TO MEETING CARE NEEDS OF OLDER ADULTS

To improve service delivery in the MI Choice waiver program by introducing three evidence-based approaches to care that will reduce nursing home admission and hospitalization rates.

SENIOR RESOURCES OF WEST MICHIGAN
\$500,000

ENHANCED CARE PLUS

To address issues of access to quality and equitable medical care for older adults with chronic disease conditions through a home-based primary care program.

THE REGENTS OF THE UNIVERSITY OF MICHIGAN
\$497,495

A STATEWIDE IMPLEMENTATION OF EMPOWER@HOME

To address the negative health impacts of depression, anxiety, and social isolation among homebound older adults in three MDHHS programs through an online therapy program.

THE SENIOR ALLIANCE AREA AGENCY ON AGING 1-C
\$454,494

HEARKEN

To enroll 500 participants in the Senior Alliance's Hearken program over the two-year project period to help them establish a social network and meet their individual needs.

UPPER PENINSULA HEALTH CARE SOLUTIONS
\$447,894

HEALTHY AGING AT HOME

To address the needs of an aging population in Michigan's Upper Peninsula by coordinating regional primary health, behavioral health, and social services to improve access to care for some of the most vulnerable older adults, so they can continue to live at home.

WAYNE STATE UNIVERSITY
\$492,354

DETROIT OLDER ADULT HOME SAFETY ASSESSMENTS

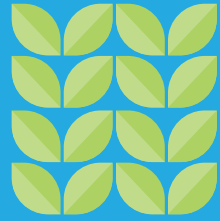
To provide evidence-based product safety interventions and connections to other resources in the community that can improve health and wellbeing.

WESTERN MICHIGAN UNIVERSITY
\$412,612

CULTIVATING FALLS PREVENTION CULTURE BY INTELLIGENT LEARNING

To develop an online learning platform to train staff in nursing facilities to address behaviors that can reduce the risk of falls, and to test the model and determine healthcare cost savings for patients and healthcare organizations.





2021 GRANTS

NUTRITION & HEALTHY LIFESTYLES

CATCH GLOBAL FOUNDATION **\$481,000**

CATCH MICHIGAN: EXPANDING WHOLE CHILD WELLNESS STATEWIDE

To expand the evidence-based CATCH Whole Child Wellness program to schools across the state and to cement the CATCH coordination model into schools' practices and environments through the work of collaborative partners and ambassadors.

COMMUNITY ACTION AGENCY **\$200,000**

A SYSTEMS APPROACH TO FOOD SECURITY FOR BLACK CHILDREN

To engage the community to develop solutions to address the root causes of food insecurity among Black children in Jackson by creating long-term sustainable improvements in the health of resource-poor communities.

COMMUNITY MENTAL HEALTH OF OTTAWA COUNTY **\$155,000**

HEALTHY LIVING AND LEARNING OTTAWA COUNTY

To establish a manageable approach to reducing obesity and chronic illnesses among people living with intellectual and developmental disabilities through nutritional education, physical wellness programming, and individualized wellness consultations.

CRIM FITNESS FOUNDATION **\$150,000**

GROWING RESILIENCE: MIND, BODY, AND COMMUNITY

To initiate a Food Policy Council in Flint, which will create an organizational body that will recruit stakeholders, collect input, facilitate meetings, and create action plans to improve their local food system.

DETROIT PUBLIC SCHOOLS FOUNDATION **\$159,500**

HORTICULTURE CAREER PATHWAYS PROGRAM PLANNING

To provide Detroit Public Schools students with a collaborative work-based training model rooted within a farm-to-school-based curriculum, preparing students for higher education and direct career pathways while simultaneously providing free healthy foods.

INTER-TRIBAL COUNCIL OF MICHIGAN **\$499,131**

NATIVE AMERICAN NUTRITION PRESCRIPTION PROGRAM

To support healthy nutrition behavior change through referrals to a culturally tailored nutrition prescription program, which ensures that the foods and intervention methods are culturally appropriate to promote commitment and engagement from participating individuals.

MICHIGAN DEPARTMENT OF EDUCATION **\$499,696**

BEST FOOD FORWARD

To build healthy food systems within targeted school communities and establish direct partnerships between schools, health providers, businesses, community action agencies, faith-based communities as well as social service organizations.

MICHIGAN HEALTH IMPROVEMENT ALLIANCE **\$339,648**

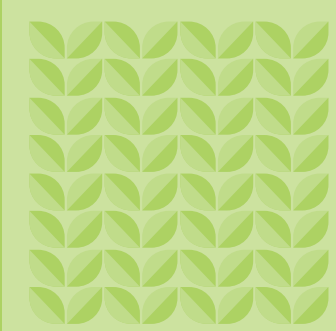
LOCAL FOOD ECOSYSTEM IMPROVEMENT PROJECT

To advance regional food system improvement intervention by organizing stakeholders and on-the-ground resources to develop custom, region-based plans to improve food production, distribution, processing, and policies in the region.

MICHIGAN STATE UNIVERSITY **\$499,948**

ADVANCING HEALTH & EQUITY VIA MICHIGAN'S LOCAL FOOD COUNCILS

To build capacity among local food council leaders and statewide food and health network leaders through customized, needs-based learning experiences and technical assistance including in-person workshops, webinars, and site visits.



MICHIGAN STATE UNIVERSITY
\$482,322

**EXPANSION OF PRODUCE PRESCRIPTIONS:
A PRENATAL PILOT**

To expand evidence-based fruit and vegetable prescription programs to the prenatal population and inform policy conversations specific to the cost benefit of these interventions.

MICHIGAN STATE UNIVERSITY
\$500,000

**FOOD AS MEDICINE FOR HIGH-RISK PREGNANT
AND POSTPARTUM WOMEN**

To establish a Fresh Rx intervention for rural pregnant and postpartum women from 11 counties in northwest Michigan, beginning with screening for food insecurity or other high-risk conditions, such as substance abuse disorder and gestational hypertension.

NORTHERN MICHIGAN UNIVERSITY
\$194,421

**EXPLORING A HEALTHY, SUSTAINABLE FOOD
NETWORK IN MI UP**

To increase access to healthy, high-quality food for all residents of the Upper Peninsula through infrastructure improvements, and by determining the feasibility of an aggregation, distribution, and light food processing facility serving Marquette and Alger Counties.

SPARROW FOUNDATION – SPARROW HEALTH SYSTEM
\$231,206

**FEEDING YOUR GROWING FAMILY – ADDRESSING FOOD
INSECURITY AMONG AT-RISK MOTHERS**

To address food insecurity by increasing nutrition, health and wellness among at-risk mothers and their children by providing access to resources, education, food, and meal preparation supplies.

SUPERIOR HEALTH FOUNDATION
\$200,000

IMPROVING FOOD INSECURITIES IN THE U.P.

To support grant programs focusing on access to healthy food and illness reduction in the Upper Peninsula.

VISTA GRANDE VILLA
\$499,998

VILLAGE GARDEN VENTURE

To implement a tested intergenerational model to address fresh food-access and social isolation challenges many of Jackson’s older adult and youth populations suffer from.

WAYNE STATE UNIVERSITY
\$198,892

CITIZENSHIP FOR HEALTH

To create a community-driven program to improve health, specifically diet and physical activity, in one neighborhood in Detroit.

WAYNE STATE UNIVERSITY
\$500,000

BHC: REDUCING HEALTH DISPARITIES IN SCHOOLS

To create a more intensive approach to implementing Building Healthy Communities in low-resource school districts to ensure that healthy behaviors and interventions are provided to children with the potential for high health disparities.

WAYNE STATE UNIVERSITY
\$375,000

FUNCTIONAL AGING & MINDFULNESS FOR SENIORS

To improve health among seniors through physical activity, meditation, nutrition education, and communities of practice for care providers, enriching the environments where seniors age and establishing an extensive framework to target the disparities underlying Metro-Detroit seniors.



2021 MULTI-FUNDER COLLABORATIVE:

**ADDRESSING FOOD AND
NUTRITION INSECURITY TO
IMPROVE HEALTH EQUITY**

The Health Fund joined Blue Cross Blue Shield of Michigan, the Blue Cross Blue Shield of Michigan Foundation, and the W.K. Kellogg Foundation in a multi-funder collaborative to address food and nutrition insecurity in the Lower Peninsula. Programs will strengthen local food systems, increase access to foods that improve health outcomes, reduce the risk of chronic disease, create realistic strategies to improve regular consumption of health-protective food, address food pipelines and supply chain challenges, and increase organizational capacity and infrastructure.

COMMUNITY ACTION HOUSE
\$50,000

**HEALTHY EATING & NUTRITION ADVOCACY
@ THE HOLLAND/ZEELAND FOOD CLUB**

GROUNDWORK CENTER FOR RESILIENT COMMUNITIES
\$75,000

**A COLLECTIVE APPROACH TO EXECUTING
AND DISTRIBUTING LOCAL FOOD PURCHASES
FOR EMERGENCY FOOD PROVIDERS**

MICAH 6 COMMUNITY
\$20,000

EXPAND AND RESTARTING POP-UP MARKETS

OAKLAND UNIVERSITY
\$60,000

**PRESCRIPTION FOR A HEALTHY OAKLAND-
SOUTHEAST EXPANSION**

ROOSEVELT PARK NEIGHBORHOOD ASSOCIATION
\$20,000

**EXPANSION OF CESAR E. CHAVEZ FARMERS MARKET
SERVICES & COMMUNITY GARDEN PROGRAMMING**

UNITED WAY OF NORTHEAST MICHIGAN
\$75,000

NE MI HEALTHY FOOD PROJECT

WAYNE METROPOLITAN COMMUNITY ACTION AGENCY
\$25,000

THE EMPOWERED PANTRY



2021 GRANTS

COMMUNITY HEALTH IMPACT

3:11 YOUTH HOUSING
\$100,000

CIRCLES OF SUPPORT FOR HOMELESS YOUTH

AGEWELL SERVICES OF WEST MICHIGAN
\$27,500

MEALS ON WHEELS AND LUNCH AND ACTIVITY CENTERS TECH GROWTH

AMERICAN HEART ASSOCIATION, INC.
\$100,000

IT TAKES A CITY COLLABORATIVE

AMERICAN INDIAN HEALTH AND FAMILY SERVICES OF SOUTHEAST MICHIGAN
\$92,487

WENENIIGANZEJIK: THE FUTURE LEADERS PROJECT

ANN ARBOR CENTER FOR INDEPENDENT LIVING
\$100,000

MICHIGAN ADAPTIVE SPORTS & INCLUSIVE RECREATION INITIATIVE

AREA AGENCY ON AGING 1-B
\$89,240

OAKLAND TOGETHER SOCIAL ISOLATION LIFELINE

ATLANTIC IMPACT
\$40,418

OUR TOWN CARES

BIG BROTHERS BIG SISTERS OF METROPOLITAN DETROIT
\$92,070

SUPPORTING BEHAVIORAL HEALTH THROUGH THERAPEUTIC MENTORING

BRIDGING COMMUNITIES, INC.
\$99,420

AGENCIES UNITED FOR HEALTHY AGING CHW ACTIVATION INITIATIVE

CASS COMMUNITY SOCIAL SERVICES
\$93,775

SOCIAL HEALTH INTEGRATION IN THE CASS CORRIDOR

CATHERINE'S HEALTH CENTER
\$50,000

EXPANDING AWARENESS OF ACCESS TO CARE

CENTER FOR HEALTH RESEARCH AND TRANSFORMATION (CHRT)
\$100,000

HOME NUTRITION+ PROGRAM

CHALLENGE MOUNTAIN OF WALLOON HILLS, INC.
\$50,000

FEASIBILITY STUDY: ADAPTIVE SKIING LODGE & EQUIPMENT PROJECT

CHELSEA SENIOR CENTER
\$99,700

KICKSTART THE STOCKBRIDGE SENIOR CENTER

CHILDREN'S HEALING CENTER
\$100,000

ISOLATION & LONELINESS BEHAVIORAL HEALTH SUPPORT

COMMUNITIES FIRST, INC.
\$100,000

FLINT CULINARY HUB

COMMUNITY ACTION HOUSE
\$50,000

DEEPENING COLLABORATION: LAKESHORE FOOD RESCUE





COMMUNITY FOUNDATION FOR SOUTHEAST MICHIGAN
\$99,700

COLLABORATIVE FUNDING: BLACK-LED MENTAL HEALTH PILOT PROGRAM

CRIM FITNESS FOUNDATION
\$100,000

MINDFULNESS-BASED RESILIENCE TRAINING FOR FIRST RESPONDERS

DOWNTOWN BOXING GYM YOUTH PROGRAM
\$85,400

WHOLE STUDENT WELLNESS: A FRAMEWORK FOR LIFE

EASTERN MICHIGAN UNIVERSITY
\$100,000

HEALTH COACHES: WELLNESS AND FITNESS FOR OLDER ASIAN AMERICANS

EPILEPSY FOUNDATION OF MICHIGAN
\$20,000

SEIZURE SMART MENTAL HEALTH PROFESSIONAL NETWORK

FAMILY SUPPORT CENTER OF BARRY COUNTY
\$40,000

BUILDING A TRAUMA INFORMED BARRY COUNTY

FERRIS STATE UNIVERSITY
\$100,000

TELEHEALTH: INCREASE SUD/ODU ACCESS IN A THREE-COUNTY AREA

THE FIRST TEE OF MID-MICHIGAN (FIDUCIARY: MICHIGAN STATE UNIVERSITY)
\$99,692

ENHANCING YOUTH PHYSICAL ACTIVITY AND WELL-BEING (YPAW)

FOCUS:HOPE
\$50,000

THE FOCUS:HOPE VOLUNTEER MANAGEMENT SYSTEM

FOUR COUNTY COMMUNITY FOUNDATION
\$96,876

IMPROVING HEALTH OUTCOMES FOR LAPEER COUNTY SENIORS

GENERATIONS UNITED
\$50,000

INTERGENERATIONAL INNOVATION HUB FOR A HEALTHY MICHIGAN

GENESISHOPE
\$99,780

GREATER VILLAGES COMMUNITY RESPONSE SYSTEM

GRAND RAPIDS AFRICAN AMERICAN HEALTH INSTITUTE
\$100,000

THE AFRICAN AMERICAN YOUTH WELLNESS & MENTAL HEALTH PROGRAM

GRAND RAPIDS SALVATION ARMY KROC CENTER
\$100,000

RESTORING HEALTH

GRAND TRAVERSE PAVILIONS FOUNDATION
\$37,932

FIBER-OPTIC ENDOSCOPIC EVALUATION OF SWALLOWING/FEES PROGRAM

GREATER DETROIT AREA HEALTH COUNCIL
\$99,557

BROTHER TO BROTHER

GROUNDWORK CENTER FOR RESILIENT COMMUNITIES
\$100,000

BUILDING A FOUNDATION FOR COMMUNITY HEALTH

GROWING HOPE
\$99,492

HEALTH EQUITY IN YPSILANTI VIA A TEEN LEADERSHIP PROGRAM

HABITAT FOR HUMANITY DETROIT
\$100,000

RETURN HOME SAFE

HEALTH DEPARTMENT OF NORTHWEST MICHIGAN
\$100,000

BEHAVIORAL HEALTH PLANNING INITIATIVE IN THE NMCHIR

HEALTH EMERGENCY LIFELINE PROGRAMS
\$100,000

TRANSGENDER AGING AND HEALTH PROJECT

HEART OF WEST MICHIGAN UNITED WAY
\$99,999

COLLABORATION PLANNING FOR FNC AND FOOD POLICY COUNCIL

HENRY FORD HEALTH SYSTEM
\$99,998

IMPROVING OLDER ADULT HEALTHCARE IN A VIRTUAL ENVIRONMENT

HOME OF NEW VISION
\$100,000

JACKSON ENGAGEMENT CENTER FOR SUBSTANCE USE DISORDER

HURON VALLEY AMBULANCE, INC.
\$100,000

COMMUNITY PARAMEDIC SUSTAINABILITY COLLABORATION

INTERFAITH HEALTH AND HOPE COALITION (FIDUCIARY: METRO SOLUTIONS)
\$50,000

CONNECTIONS OF FAITH, HEALTH, AND HOPE

ISHPEMING PUBLIC SCHOOL DISTRICT
\$86,291

GROWING FUTURE FARMERS, HEALTHY EATERS, AND LEADERS PROJECT

KADIMA
\$50,000

AGENCY INTEGRATION PROJECT

MAGGIE'S WIGS 4 KIDS OF MICHIGAN, INC.
\$12,800

STRATEGIC FRAMEWORK AND SUCCESSION PLANNING

MENTOR2YOUTH (FIDUCIARY: NONPROFIT ENTERPRISE AT WORK, INC.)
\$16,200

RAISING ROYALTY EVALUATION PROJECT | YPSILANTI

MICHIGAN BREASTFEEDING NETWORK
\$100,000

COLLABORATIVE ACTION TO ADVANCE BLACK BREASTFEEDING JUSTICE

MICHIGAN HEALTH IMPROVEMENT ALLIANCE
\$49,830

MIHIA AND THRIVE WEBSITE REDESIGN EFFORT

MICHIGAN ORGANIZATION ON ADOLESCENT SEXUAL HEALTH
\$100,000

ADDRESSING THE BEHAVIORAL HEALTH NEEDS OF LGBTQ+ STUDENTS

MICHIGAN PRIMARY CARE ASSOCIATION
\$75,000

IMPROVING COMMUNITY PARTNERSHIPS FOR ELDERLY ADULTS

MICHIGAN STATE UNIVERSITY
\$99,996

ACCESSIBLE - ONLINE NUTRITION & EXERCISE (A-ONE)

MICHIGAN STATE UNIVERSITY
\$100,000

DEVELOPING HEALTH EDUCATION LESSONS FOR TRIBAL HOME VISITING

MICHIGAN STATE UNIVERSITY
\$100,000

TELEMEDICINE TO IMPROVE HEALTHCARE ACCESS FOR RURAL SENIORS

MICHIGAN TECHNOLOGICAL UNIVERSITY
\$100,000

KEEP THE UP MOVING DURING COVID-19 WITH EXERCISE IS MEDICINE

MIGRANT LEGAL AID, INC.
\$100,000

IMPROVING HEALTH FOR MIGRANT AND IMMIGRANT FOOD WORKERS

NORTHERN MICHIGAN UNIVERSITY
\$100,000

THE CAREGIVER CAREER PIPELINE

NORTHSIDE ASSOCIATION FOR COMMUNITY DEVELOPMENT
\$100,000

HEAL (HEALTHY ENVIRONMENT ACTIVE LIVING)

OTTAWA COMMUNITY SCHOOLS NETWORK
\$63,435

EQUITABLE WELLNESS OPPORTUNITIES FOR AREA YOUTH AND FAMILIES



PACKARD HEALTH
\$50,000

CREATING A WELLNESS & PREVENTION ROADMAP
AT PACKARD HEALTH

PACKARD HEALTH, INC.
\$100,000

A BEHAVIORAL HEALTH COLLABORATIVE FOR YOUNG
BLACK MEN & BOYS

PREVENTION MICHIGAN, INC.
\$37,501

BOARD DEVELOPMENT AND REBRANDING

PROGRESSIVE LIFESTYLES, INC.
\$100,000

EXPANDING DEMENTIA MINDS GROUPS

PROJECT HEALTHY COMMUNITY
\$100,000

ORGANIZATIONAL SYNERGIES ADVANCING
COMMUNITY HEALTH

REGION II COMMISSION ON SERVICES TO THE AGING
\$100,000

INTEGRATION FOR SYSTEM OF CARE DATA COLLECTION

SAGINAW COMMUNITY FOUNDATION
\$100,000

BUILDING BRIDGES TO BEHAVIORAL
HEALTHCARE – SAGINAW COUNTY

**SERVICES AND ADVOCACY FOR GAY, LESBIAN, BISEXUAL
AND TRANSGENDER ELDERNS INC.**
\$100,000

LGBTQ+ INTERGENERATIONAL TIMEBANK COLLABORATIVE

SHARECARE OF LEELANAU, INC.
\$100,00

PEER-TO-PEER FAMILY CAREGIVER SUPPORT PROGRAM

SOUTHWEST SOLUTIONS CORPORATION
\$90,000

PIQUETTE SQUARE VETERANS HEALING GARDEN

SPECIAL OLYMPICS MICHIGAN
\$100,000

INCLUSIVE HEALTH

SUPERIOR HEALTH SUPPORT SYSTEMS
\$45,000

STRATEGIC SUPPORT INITIATIVE

TEN16 RECOVERY NETWORK
\$100,000

OASIS DEVELOPMENT IN SUD TREATMENT DESERTS

THE GUIDANCE CENTER
\$99,685

YOUTH MENTAL HEALTH FIRST AID TRAINING

THE REGENTS OF THE UNIVERSITY OF MICHIGAN
\$100,00

LITTLE VICTORS LEAGUE: CARE FOR MEDICALLY
COMPLEX INFANTS

THE REGENTS OF THE UNIVERSITY OF MICHIGAN
\$45,564

TITLE IVE TO PREVENT INFANT MORTALITY

**U.P. OPIOID PARTNERSHIP (FIDUCIARY: SUPERIOR
HEALTH FOUNDATION)**
\$100,000

U.P. OPIOID PARTNERSHIP

UNITED METHODIST COMMUNITY HOUSE
\$50,000

THE FRESH MARKET AT UMCH

**UNITED METHODIST RETIREMENT COMMUNITIES
(UMRC) FOUNDATION**
\$38,937

TACKLING SYSTEMIC RACISM THROUGH DEI TRAINING

UNITED WAY FOR SOUTHEASTERN MICHIGAN
\$100,000

SOUTHEAST MICHIGAN COMMUNITY
INFORMATION EXCHANGE

WASHTENAW HEALTH PLAN CORPORATION
\$100,000

ESTABLISHING A WASHTENAW LATINO HEALTH
SERVICES CONSORTIUM

WASHTENAW PROMISE, INC.
\$34,98

BOB-A-LOO. MOVING AT-RISK CHILDREN TOWARD
A HEALTHY PAT

WAYNE STATE UNIVERSITY
\$98,086

PARTNERSHIP TO PREVENT OBESITY IN PRESCHOOLERS

WAYNE STATE UNIVERSITY
\$93,986

PEERS TO PROFESSIONALS

**WE THE PEOPLE OPPORTUNITY FARM (FIDUCIARY:
NONPROFIT ENTERPRISE AT WORK, INC.)**
\$22,300

BUILDING BLOCKS

WESTERN U.P. PLANNING & DEVELOPMENT REGION
\$100,000

IMPROVING CAPACITY & HEALTHY LOCAL FOOD ACCESS
IN U.P. SCHOOLS

YWCA KALAMAZOO
\$100,000

KALAMAZOO'S MATERNAL/CHILD HEALTH UNIVERSAL
ACCESS PROJECT



2021 GRANTS

SPECIAL PROJECTS & EMERGING IDEAS

MICHIGAN ASSOCIATION FOR LOCAL PUBLIC HEALTH \$500,000

OUTREACH TO VULNERABLE POPULATIONS FOR COVID-19 VACCINE

To allow organizations to increase capacity for outreach activities and to provide services that overcome barriers to vaccination.

MICHIGAN COUNCIL FOR MATERNAL AND CHILD HEALTH \$410,500

BUILDING SUPPORT AND SUSTAINABILITY FOR SCHOOL NURSES

To create training, resources, local and state infrastructure, and collaborative systems, and to solidify long-term sustainability for school nurses in Michigan.

MICHIGAN DEPARTMENT OF EDUCATION \$500,000

STRENGTHENING SYSTEMS OF SUPPORT (S3) FOR LGBTQ+ STUDENTS

To build a sustainable model for schools to provide safe, supportive, and inclusive learning environments that improve LGBTQ+ students' health, wellbeing, and educational outcomes.

MICHIGAN DEPARTMENT OF HEALTH & HUMAN SERVICES \$20,000

ADD RACE/ETHNICITY DATA TO MDHHS MASTER PERSON INDEX

To add race and ethnicity data to the MDHHS Master Person Index, allowing providers to identify underserved populations, address racial/ethnic health disparities, and increase health outcomes.

MICHIGAN DEPARTMENT OF HEALTH & HUMAN SERVICES \$500,000

AUTOMATING MEDICAID FOR INCARCERATED BENEFICIARIES

To streamline and automate data sharing between MDHHS Medicaid and jails, improving treatment continuity including access to medications and therapies.

MICHIGAN DEPARTMENT OF HEALTH & HUMAN SERVICES \$200,000

DEVELOPING SUSTAINABLE BEHAVIORAL WORKFORCE STABILITY

To support behavioral workforce development through research and qualitative analysis, stakeholder engagement plan development, and written reports.

MICHIGAN DEPARTMENT OF HEALTH & HUMAN SERVICES \$494,800

IMPROVING ACCESS AND USE OF HCBS BY ADDRESSING HEALTH EQUITY

To analyze Medicaid data and identify racial or ethnic disparities in the type of services offered to individuals via a community-led initiative.

MICHIGAN DEPARTMENT OF HEALTH & HUMAN SERVICES \$400,000

INFANT VITALITY – DETROIT, WAYNE, OAKLAND & MACOMB COUNTIES

To garner insight into actions that can be taken to sustain and further infant mortality reduction and inform decision-making within systems and policy.

MICHIGAN DEPARTMENT OF HEALTH & HUMAN SERVICES \$180,230

INTEGRATING CANCER SCREENING REFERRALS INTO MI BRIDGES

To develop and integrate a system in MI Bridges to identify and refer women to the MI Breast and Cervical Cancer Control Navigation Program (BC3NP).

MICHIGAN DEPARTMENT OF HEALTH & HUMAN SERVICES \$150,000

STRATEGIC ALIGNMENT PLANNING BETWEEN MDHHS AND MSP

To reduce crimes, increase accessibility to human service support, and improve community relations in three identified communities that have a large population of people of color.



MICHIGAN DEPARTMENT OF HEALTH & HUMAN SERVICES
\$59,000

**TRANSPORTATION RESOURCES TO MEDICAID
BENEFICIARIES: PHASE 2**

To create a transportation module for the myHealthButton and myHealthPortal to enhance the existing Medicaid beneficiary-facing technology.

**MICHIGAN HEALTH & HOSPITAL ASSOCIATION
KEYSTONE CENTER**
\$484,139

**ACCELERATING HEALTH EQUITY THROUGH
QUALITY IMPROVEMENT**

To collect data to identify disparities, gaps in care, and to adopt policies that improve access to care for all populations.

MICHIGAN PRIMARY CARE ASSOCIATION
\$500,000

**OUTREACH TO VULNERABLE POPULATIONS
FOR COVID-19 VACCINES**

To identify partnerships between health centers and/or health departments and community-based organizations to increase access to the COVID-19 vaccine for vulnerable populations.

MICHIGAN PUBLIC HEALTH INSTITUTE
\$498,186

**COMMUNITY ARCHITECTURE TO ACHIEVE
AND SUSTAIN EQUITY**

To support the Achieving Birth Equity through Systems Transformation (ABEST) plans in Berrien County and select tribal communities and create the materials and framework for subsequent collaborative plans throughout the state.

MICHIGAN PUBLIC HEALTH INSTITUTE
\$200,000

**PLANNING FOR DEVELOPMENT & IMPLEMENTATION
OF FOSTER CARE ELECTRONIC HEALTH RECORD (EHR)**

To develop electronic health records for foster youth served by both public and privately run childcare agencies, providing a foundation for a statewide solution.

MICHIGAN STATE UNIVERSITY
\$500,000

**HOSPITAL ENGAGEMENT ADDICTION RESOURCES
TEAM (HEART)**

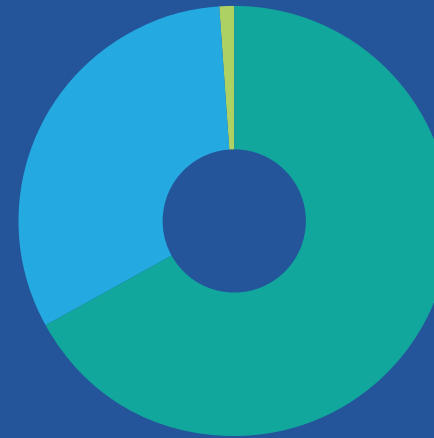
To support hospitals in implementing a replicable inpatient addiction consultation service (rounding) through technical support and information sharing.



FINANCIALS



2021 INCOME & SOURCES TOTAL \$126,750,000*



- Blue Cross Blue Shield of Michigan: **\$85,000,000**
- Investments: **\$41,700,000**
- Other: **\$50,000**

2021 EXPENDITURES TOTAL \$83,400,000*



- Grants and programs: **\$38,800,000**
- Michigan Medigap Subsidy: **\$16,100,000**
- Administration: **\$2,500,000**
- Transferred to Endowment: **\$26,000,000**

We are grateful for Blue Cross Blue Shield of Michigan's continuing funding support, which has allowed us to award over \$227 million in grants since 2014.

**All amounts rounded to the nearest \$100,000.*

BOARD OF DIRECTORS



SUSAN JANDERNOA, CHAIR

RETIRED EDUCATOR AND PHILANTHROPIST

ROB FOWLER, VICE CHAIR

CEO, PUBLIC POLICY ASSOCIATES

KEITH PRETTY, TREASURER

RETIRED PRESIDENT, NORTHWOOD UNIVERSITY

MICHAEL WILLIAMS, SECRETARY

PRESIDENT AND CEO, ORCHARDS CHILDREN'S SERVICES

KATHRYN BOLES

RETIRED PRESIDENT AND CEO, VALLEY AREA AGENCY ON AGING

TIM DAMSCHRODER

CHAIRPERSON, BUSINESS LAW PRACTICE GROUP BODMAN PLC

ZAINEB HUSSEIN

CHIEF OF STAFF, CITY OF DEARBORN

TINA WAHL

SENIOR LEAD POLICY SPECIALIST, DIVISION OF ENVIRONMENTAL HEALTH AT THE MICHIGAN DEPARTMENT OF HEALTH AND HUMAN SERVICES VIA MPH





MICHIGAN HEALTH ENDOWMENT FUND

 9829 SPENCER ROAD, SUITE 201
BRIGHTON, MI 48114

 330 MARSHALL STREET, SUITE 201
LANSING, MI 48912

 INFO@MIHEALTHFUND.ORG

 MIHEALTHFUND.ORG

 517-374-0031